

Schwinn Produce Farm Blank Floorplan

Please read these instructions carefully.

This document will help you create a floor plan of our tables for your event at Schwinn Produce Farm. This process does require your thinking cap but don't worry, it's easy and fun!

You'll use the materials listed below to trace and draw circles and rectangles representing our round and rectangle tables. The second page represents the main event space of the inside of our barn. We've carefully measured it and drawn it so that 1/8 of an inch on the paper is 1 foot in the barn. The little squares with "x" in them are the posts of the barn so keep in mind you cannot put tables on top of those.

To successfully create a floorplan with this PDF you'll need the following:

This file printed out on paper. Just print it and it should be two pages.

A ruler like you used in grade school.

A dime (you know, a 10 cent US currency coin).

A pencil with an eraser.

Super Duper Important:

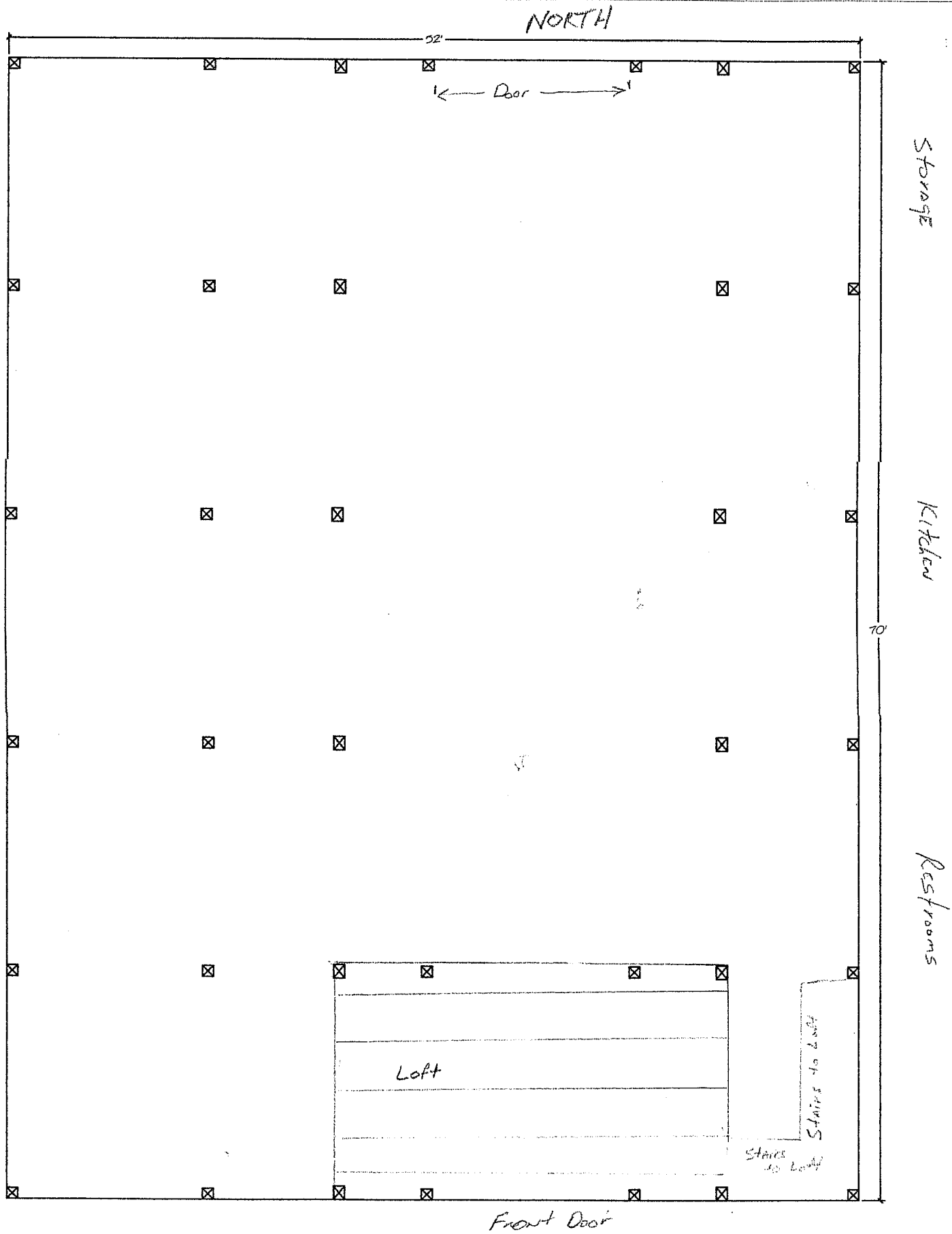
Your floorplan can only use a MAXIMUM of:

12 round tables which are 60" (five feet) in diameter, or about the size of a dime on the layout.

21 rectangle tables which are 8 feet long and 3 feet wide, or 1 inch by 3/8 inch on the layout.

Trace the dime for a round table and draw a rectangle for a rectangle table. Just don't overlap with the posts or block access to storage, kitchen, restrooms, or doors.

Optional: on a separate paper you can trace 12 circles with dimes and draw 21 tables that are 1 inch by 3/8 inch and CUT THEM OUT. This way you can move them around easily on the layout page. It's totally up to you how crafty you get. Enjoy!



SCALE: 1/8" = 1'-0"